



# İÇİNDEKİLER / INDEX

**Malzemeler**

Materials

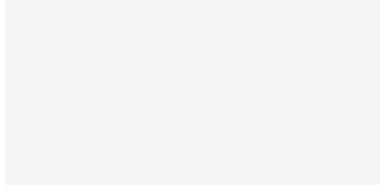
**Kumaşlar**

Fabrics

# LAMİNAT / LAMINATE

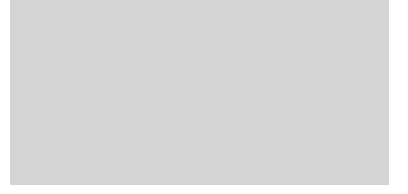
Beyaz  
White

L1019



Gri  
Grey

L1017



Laminat Antrasit  
Laminate Anthracite

L1002



Beyaz Amerikan Meşe  
American White Oak

L1020



Freze Amerikan Ceviz  
Freze American Walnut

L1021



Dumanlı Okaliptus  
Smoked Eucalyptus

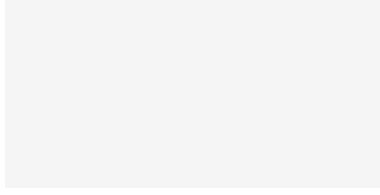
L4213



# MELAMİN / MELAMINE

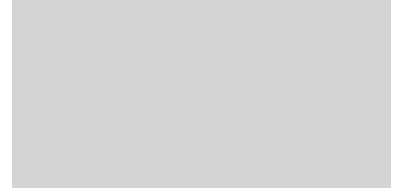
Beyaz  
White

M1019



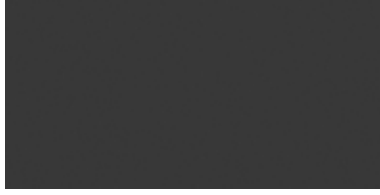
Gri  
Grey

M1017



Antrasit  
Anthracite

M1002



Freze Amerikan  
Beyaz Meşe  
Freze American  
White Oak

M1020



Freze Amerikan  
Ceviz  
Freze American  
Walnut

M1021



Dumanlı Okaliptus  
Smoked Eucalyptus

M4213



# KAPLAMA / VENEER

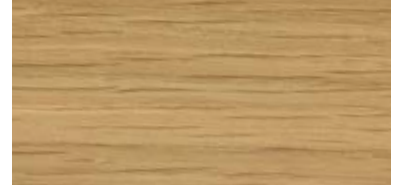
Freze Amerikan Ceviz  
American Rift Cut Walnut

K1011



Freze Amerikan Meşe  
American Rift Cut Oak

K1012



Siyah Anilin  
Black Aniline  
K1015



Dumanlı Okaliptus  
Smoked Eucalyptus

K1013



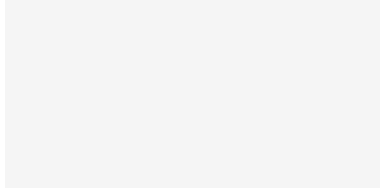
Smoked Meşe Kaplama  
Smoked Oak Veneer  
K1014



# LAKE / LACQUER

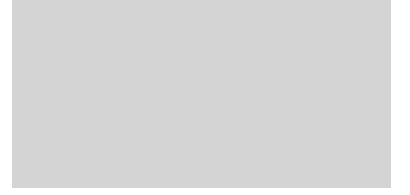
Beyaz  
White

LC9016



Gri  
Grey

LC7662



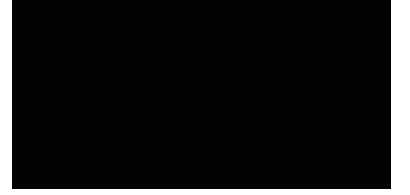
Antrasit  
Anthracite

LC7024



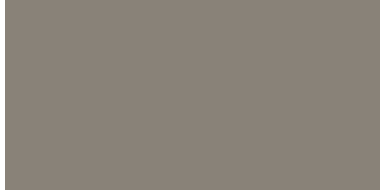
Siyah  
Black

LC9005



Sahra Bej  
Sahara Beige

LCOL07



Lacivert  
Dark Blue

LC260 20 15



Hardal  
Mustard

LC1011



Parlak Siyah  
Bright Black

LP9005



Vizon  
Mink

LC1019



Koyu Yeşil  
Dark Green

LC6012



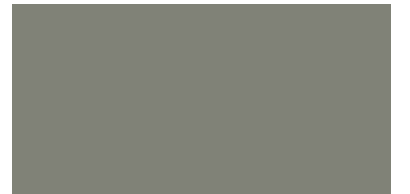
Taş Gri  
Stone Grey

LC7030



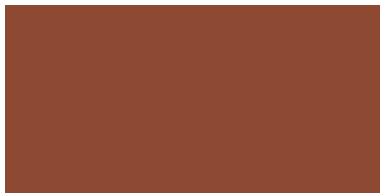
Açık Yeşil  
Light Green

LC7033



Kiremit  
Tile Red

LC8004



Kum Gri  
Sand Grey

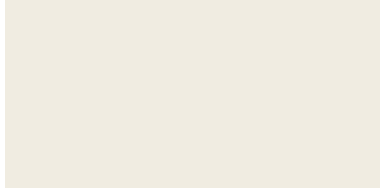
LCB155



# METAL EPOKSİ / METAL EPOXY

Beyaz  
White

MT9010



Metalik Gri  
Metallic Grey

MT7662



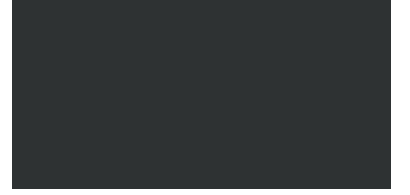
Antrasit  
Anthracite

MT7024



Siyah  
Black

MT9005



Lacivert  
Dark Blue

MT5838



Hardal  
Mustard

MT1011



Koyu Yeşil  
Dark Green

MT6012



Açık Yeşil  
Light Green

MT7033



Kiremit  
Tile Red

MT8004



Metalik Siyah  
Metallic Black

MT9672



Vizon  
Mink

MT1019



# CAM / GLASS



# AKRİLİK / ACRYLIC

Transparan Beyaz  
Transparent White

AK6230



Turuncu  
Orange

AK5120



Füme  
Smoked

AK7120



# KOMPAKT LAMİNAT / COMPACT LAMINATE

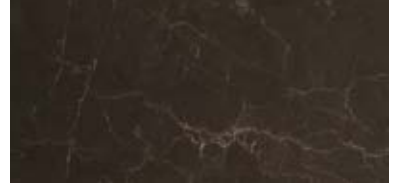
Beyaz Mermer  
White Marble

CL5657



Kahverengi Mermer  
Brown Marble

CL5658



# MERMER / MARBLE

Crema Fatin

MPCRM



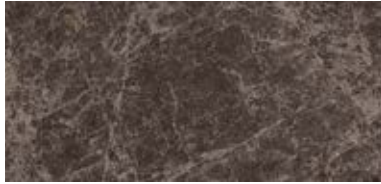
Verdi Marina

MPVRD



Emperador Dark

MPEMP



Nero Marquina

MPNRO



# ARTIFICIAL LEATHER / B

Beige

035



Khaki

440



Tan

305



Brown

366



Claret

220



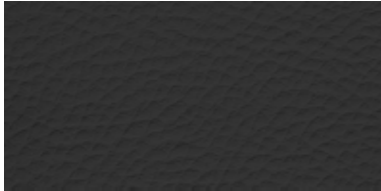
Light Grey

605



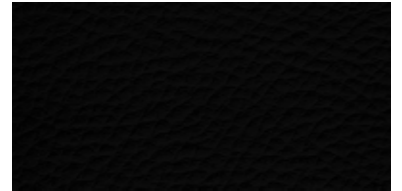
Dark Grey

620



Black

901



Cappucino

060



Navy Blue

520



# ARTIFICIAL LEATHER / B

## TEKNİK DETAYLAR / TECHNICAL SHEET

### TR

Kumaş Yapısı	%3 Poliüretan, % 80 PVC, % 17 Polyester
Genişlik	140 cm
Metre Başı Ağırlığı	520 g/m <sup>2</sup> ± 5% (EN ISO 2286-2)
Yanmaya Karşı Dayanıklılık	BS 5852 Kısım 2 CRIB 5 x EN ISO 1021 Kısım 1/2 x BS 5852 Kısım 0/1 x
Solmaya Karşı Dayanıklılık	5 EN ISO 105X12
Aşınmaya Karşı Dayanıklılık	30.000

### EN

Composition	3% Polyurethane, 80% PVC, 17% Polyester
Width	140 cm
Weight per Meter	520 g/m <sup>2</sup> ± 5% (EN ISO 2286-2)
Fire Test	BS 5852 PART 2 CRIB 5 x EN ISO 1021 PART 1/2 x BS 5852 PART 0/1 x
Lightfastness	5 EN ISO 105X12
Abrasion	30.000

# LONDON / B

Brown



Trufa



Bordeaux



Orange



Citric



Ocean



Turquoise



Light Grey



Dark Grey



Black



# LONDON / B

## TEKNİK DETAYLAR / TECHNICAL SHEET

### TR

Kumaş Yapısı	%100 Polyester
Genişlik	142 cm (+/-%3)
Metre Başı Ağırlığı	596 g/m <sup>2</sup> ± %5
Yanmaya Karşı Dayanıklılık	BS 5852 Bölüm 1 (Sigara) EN 1021-1 (Sigara) CA Tech. Bull. 117.2013/NFPA 260 (Sigara)
Solmaya Karşı Dayanıklılık	>5 (ISO 105 - B02)
Aşınmaya Karşı Dayanıklılık	80.000

### EN

Composition	100% Polyester
Width	142 cm (+/-%3)
Weight per Meter	596 g/m <sup>2</sup> ± %5
Fire Test	BS 5852 Part 1 (Cigarette) EN 1021-1 (Cigarette) CA Tech. Bull. 117.2013/NFPA 260 (Cigarette)
Lightfastness	>5 (ISO 105 - B02)
Abrasion	80.000

# SEATTLE / B

Toffee



Red



Yellow



Camel



Trufa



Moka



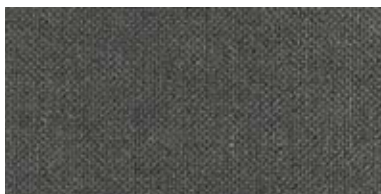
Elephant



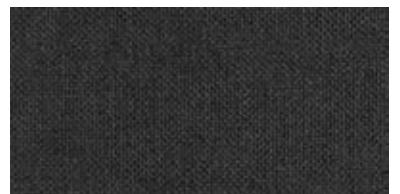
Ocean



Ash



Anthracite



# SEATTLE / B

## TEKNİK DETAYLAR / TECHNICAL SHEET

### TR

Kumaş Yapısı	%100 Polyester
Genişlik	142 cm (+/-%3)
Metre Başı Ağırlığı	653 g/m <sup>2</sup> ± %5
Yanmaya Karşı Dayanıklılık	BS 5852 Bölüm 1 (Sigara) EN 1021-1 (Sigara) CA Tech. Bull. 117.2013/NFPA 260 (Sigara)
Solmaya Karşı Dayanıklılık	5 (ISO 105 - B02)
Aşınmaya Karşı Dayanıklılık	90.000

### EN

Composition	100% Polyester
Width	142 cm (+/-%3)
Weight per Meter	653 g/m <sup>2</sup> ± %5
Fire Test	BS 5852 Part 1 (Cigarette) EN 1021-1 (Cigarette) CA Tech. Bull. 117.2013/NFPA 260 (Cigarette)
Lightfastness	5 (ISO 105 - B02)
Abrasion	90.000

# SANTUR / C

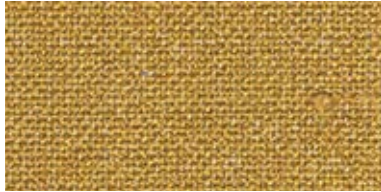
46951



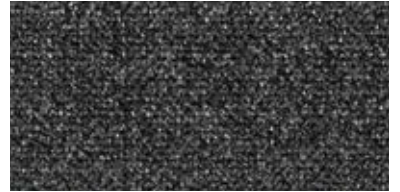
46991



49380



46970



49520



46982



46961



# SANTUR / C

## TEKNİK DETAYLAR / TECHNICAL SHEET

### TR

Kumaş Yapısı	%48 Akriklik, %29 Pamuk , %23 Polyester
Genişlik	140 cm
Metre Başı Ağırlığı	858,6 g/m <sup>2</sup>
Yanmaya Karşı Dayanıklılık	BS 5852: Kısım 1: 1979, Tutuşturma Kaynağı 0 (sigara) Başarılı BS 5852: Kısım 1: 1979, Tutuşturma Kaynağı 1 (kibrit) Başarısız
Solmaya Karşı Dayanıklılık	4-5
Aşınmaya Karşı Dayanıklılık	50.000 Martindale

### EN

Composition	48% Acrylic, 29% Cotton , 23% Polyester
Width	140 cm
Weight per Meter	858,6 g/m <sup>2</sup>
Fire Test	BS 5852: Part 1: 1979, Ignition source 0 (cigarette) PASS BS 5852: Part 1: 1979, Ignition source 1 (match) FAIL
Lightfastness	4-5
Abrasion	50.000 Martindale

# GUST / C

43882



40460



43852



40443



40540



43910



## TEKNİK DETAYLAR / TECHNICAL SHEET

### TR

<b>Kumaş Yapısı</b>	% 31 Akriklik, % 23 Viskon, %23 Pamuk, %22 Polyester, %1 Keten
<b>Genişlik</b>	140 cm
<b>Metre Başı Ağırlığı</b>	808,2 g/m <sup>2</sup>
<b>Yanmaya Karşı Dayanıklılık</b>	-
<b>Solmaya Karşı Dayanıklılık</b>	-
<b>Aşınmaya Karşı Dayanıklılık</b>	50.000 Martindale

### EN

<b>Composition</b>	31% Acrylic, 23% Viscose, 23% Cotton, 22% Polyester, 1% Linen
<b>Width</b>	140 cm
<b>Weight per Meter</b>	808,2 g/m <sup>2</sup>
<b>Fire Test</b>	-
<b>Lightfastness</b>	-
<b>Abrasion</b>	50.000 Martindale

# DOLCE / D

6780



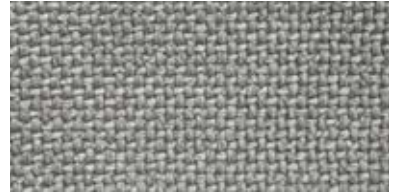
6807



6806



6773



6779



6858



# DOLCE / D

## TEKNİK DETAYLAR / TECHNICAL SHEET

### TR

Kumaş Yapısı	%100 Polyester
Genişlik	140 cm (+/-%3)
Metre Başı Ağırlığı	-
Yanmaya Karşı Dayanıklılık	-
Solmaya Karşı Dayanıklılık	-
Aşınmaya Karşı Dayanıklılık	55.000

### EN

Composition	100% Polyester
Width	140 cm (+/-3%)
Weight per Meter	-
Fire Test	-
Lightfastness	-
Abrasion	55.000

# KARAT / D

2134



2133



2137



2120



2116



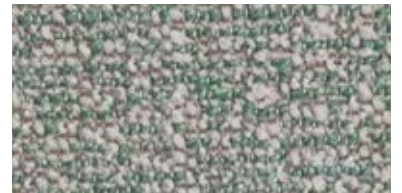
2112



2118



2119



2127



# KARAT / D

## TEKNİK DETAYLAR / TECHNICAL SHEET

### TR

Kumaş Yapısı	%60 Akriklik, %20 Pamuk, %20 Polyester
Genişlik	140 cm (+/-%3)
Metre Başı Ağırlığı	-
Yanmaya Karşı Dayanıklılık	-
Solmaya Karşı Dayanıklılık	-
Aşınmaya Karşı Dayanıklılık	50.000

### EN

Composition	60% Acrylic, 20% Cotton, 20% Polyester
Width	140 cm (+/-3%)
Weight per Meter	-
Fire Test	-
Lightfastness	-
Abrasion	50.000

# SARAFINA / E

12



13



07



10



16



15



# SARAFINA / E

## TEKNİK DETAYLAR / TECHNICAL SHEET

### TR

Kumaş Yapısı	%34 Viskon, %31 Pamuk (Geri Dönüştürülmüş Koton), %15 Keten, %13 Akrilik, %7 Polyester
Genişlik	140 cm (+/-%3)
Metre Başı Ağırlığı	941 g/m <sup>2</sup> ± %5
Yanmaya Karşı Dayanıklılık	-
Solmaya Karşı Dayanıklılık	5-6 (ISO 105 - B02)
Aşınmaya Karşı Dayanıklılık	30.000 UNI EN ISO 12947-2

### EN

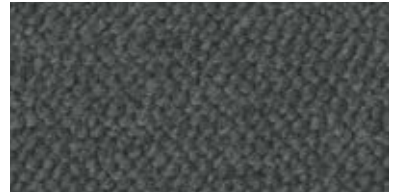
Composition	34% Viscose, 31% Cotton (Recycled Cotton), 15% Linen, 13% Acrylic, 7% Polyester
Width	140 cm (+/-3%)
Weight per Meter	941 g/m <sup>2</sup> ± 5%
Fire Test	-
Lightfastness	5-6 (ISO 105 - B02)
Abrasion	30.000 UNI EN ISO 12947-2

# PERSEIDE / E

24



12



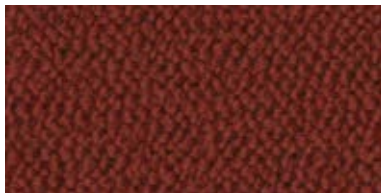
06



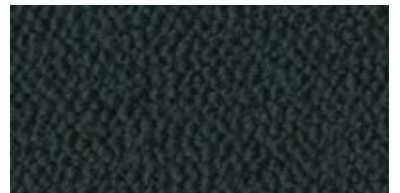
01



07



10



22



# PERSEIDE / E

## TEKNİK DETAYLAR / TECHNICAL SHEET

### TR

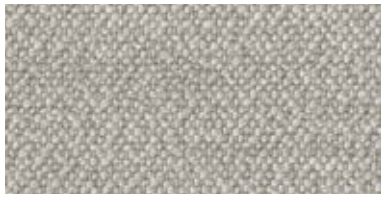
Kumaş Yapısı	%35 Yün, %35 Akrilik, %23 Polyester, %7 Pamuk
Genişlik	140 cm (+/-%3)
Metre Başı Ağırlığı	640 g/m <sup>2</sup> ± %5
Yanmaya Karşı Dayanıklılık	-
Solmaya Karşı Dayanıklılık	5-6 (ISO 105 - B02)
Aşınmaya Karşı Dayanıklılık	40.000 UNI EN ISO 12947-2

### EN

Composition	35% Wool, 35% Acrylic, 23% Polyester, 7% Cotton
Width	140 cm (+/-3%)
Weight per Meter	640 g/m <sup>2</sup> ± 5%
Fire Test	-
Lightfastness	5-6 (ISO 105 - B02)
Abrasion	40.000 UNI EN ISO 12947-2

# TULSA / E

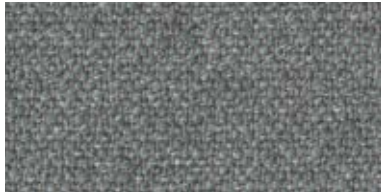
26



11



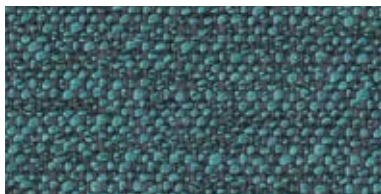
2



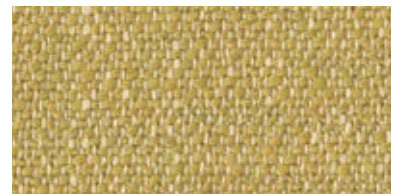
14



20



21



# TULSA / E

## TEKNİK DETAYLAR / TECHNICAL SHEET

### TR

Kumaş Yapısı	%30 Polyester, %28 Akrilik, %21 Viskon, %12 Pamuk, %9 Keten
Genişlik	140 cm (+/-%3)
Metre Başı Ağırlığı	927 g/m <sup>2</sup> ± %5
Yanmaya Karşı Dayanıklılık	-
Solmaya Karşı Dayanıklılık	5-6 (ISO 105 - B02)
Aşınmaya Karşı Dayanıklılık	40.000 UNI EN ISO 12947-2

### EN

Composition	30% Polyester, 28% Acrylic, 21% Viscose, 12% Cotton, 9% Linen
Width	140 cm (+/-3%)
Weight per Meter	927 g/m <sup>2</sup> ± 5%
Fire Test	-
Lightfastness	5-6 (ISO 105 - B02)
Abrasion	40.000 UNI EN ISO 12947-2

# TUNDRA / E

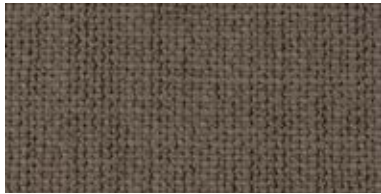
02



03



04



06



08



09



11



21



27



29



30



# TUNDRA / E

## TEKNİK DETAYLAR / TECHNICAL SHEET

### TR

Kumaş Yapısı	%42 Viskon, %36 Pamuk, %16 Akriklik, %6 Polyester
Genişlik	140 cm
Metre Başı Ağırlığı	720 g/m <sup>2</sup> ± %5
Yanmaya Karşı Dayanıklılık	BS 5852 Kısım 0-1 California TB 117:2013 CRIB 5 NFPA 260:2013
Solmaya Karşı Dayanıklılık	5 (ISO 105 - B02)
Aşınmaya Karşı Dayanıklılık	30.000 UNI EN ISO 12947-2

### EN

Composition	42% Viscose, 36% Cotton, 16% Acrylic, 6% Polyester
Width	140 cm
Weight per Meter	720 g/m <sup>2</sup> ± 5%
Fire Test	BS 5852 Part 0-1 California TB 117:2013 CRIB 5 NFPA 260:2013
Lightfastness	5 (ISO 105 - B02)
Abrasion	30.000 UNI EN ISO 12947-2

# DUNE / E

018/2



20



001/1



003/9



002/4



# DUNE / E

## TEKNİK DETAYLAR / TECHNICAL SHEET

### TR

<b>Kumaş Yapısı</b>	%35 Pamuk, %25 Akrilik, %18 Polyester, %13 Viskon, %9 Yün
<b>Genişlik</b>	138/140 cm
<b>Metre Başı Ağırlığı</b>	675 g/m <sup>2</sup> ± %5
<b>Yanmaya Karşı Dayanıklılık</b>	BS 5852 Kısım 0-1 California TB 117:2013 EN 1021-1&2
<b>Solmaya Karşı Dayanıklılık</b>	5 (ISO 105 - B02)
<b>Aşınmaya Karşı Dayanıklılık</b>	40.000 UNI EN ISO 12947-2

### EN

<b>Composition</b>	35% Cotton, 25% Acrylic, 18% Polyester 13% Viscose, 9% Wool
<b>Width</b>	138/140 cm
<b>Weight per Meter</b>	675 g/m <sup>2</sup> ± 5%
<b>Fire Test</b>	BS 5852 Part 0-1 California TB 117:2013 EN 1021-1&2
<b>Lightfastness</b>	5 (ISO 105 - B02)
<b>Abrasion</b>	40.000 UNI EN ISO 12947-2

# LINEA / F

Latte

635



\*Mastice

676



Coffee

682



\*Nocciola

607



\*Asfalto

660



Verdone

632



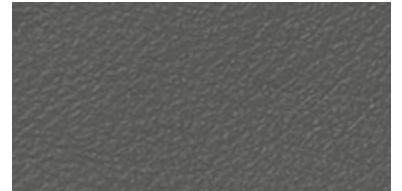
\*Nero

622



Highway

670



## TEKNİK DETAYLAR / TECHNICAL SHEET

### TR

Kumaş Yapısı	%100 Deri
Genişlik	Boyut: 4.8-5.0 m <sup>2</sup> Kalınlık: 0.9-1.1 mm
Metre Başı Ağırlığı	-
Yanmaya Karşı Dayanıklılık	BS 5852:1979 BS EN 1021-1-2:2006
Solmaya Karşı Dayanıklılık	5 (ISO 105-B02)
Aşınmaya Karşı Dayanıklılık	Kuru-500 tur Islak-250 tur Terleme-80 tur Esneklik dayanımı: Kuru-50.000 tur

### EN

Composition	100% Leather
Width	Size: 4.8-5.0 m <sup>2</sup> Thickness: 0.9-1.1 mm
Weight per Meter	-
Fire Test	BS 5852:1979 BS EN 1021-1-2:2006
Lightfastness	5 (ISO 105-B02)
Abrasion	Dry-500 cycles Wet-250 cycles Sweat-80 cycles Flexing endurance: Dry-50.000 cycles



