

Vineyard dining table wheel

by Ramón Esteve

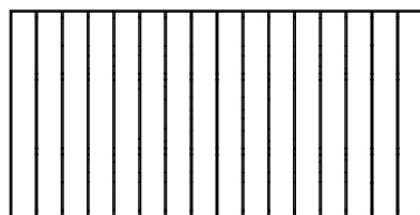
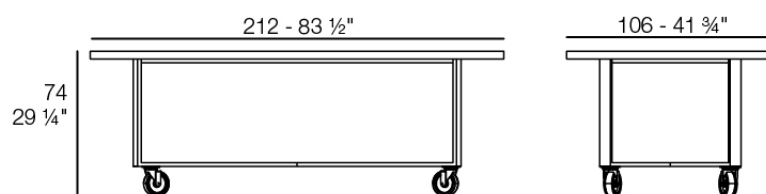
Vineyard Collection, by Ramon Esteve, is an aluminium and wooden outdoor furniture collection with a rustic and warm style.



Info

Description

Weight: 32 Kg

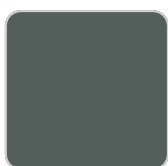


VINEYARD Mesa Comedor
VINEYARD Dining Table

Finishes

panel/top

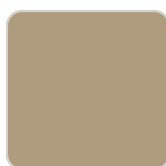
Solid Core
Ref. VVAR03493



modo green

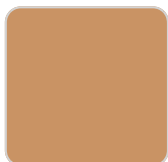


oak1



oak2

Aluminium
Ref. VVAR03493



natural teak



weathered teak

